



focus on essentials

Infor SyteLine  
Integral Enterprise  
Viewer™

# discrete manufacturing essentials

## Custom Reports & Queries in Your Hands in Minutes



The Integral Enterprise Viewer (IEV) is an Enterprise Data Access application, that allows all users at your company to perform both queries and a variety of reports in real-time.

IEV allows you to combine the different data stores across the Enterprise – whether the data resides within the traditional four walls of your company or across multiple sites. These data stores include business systems, manufacturing systems, customer relationship management systems, eCommerce applications, and even “homegrown” data stores.

Because of IEV’s centrally located data retrieval system, this data can be securely accessed from either the LAN client or in a Web browser on the internet (both clients are included with IEV).

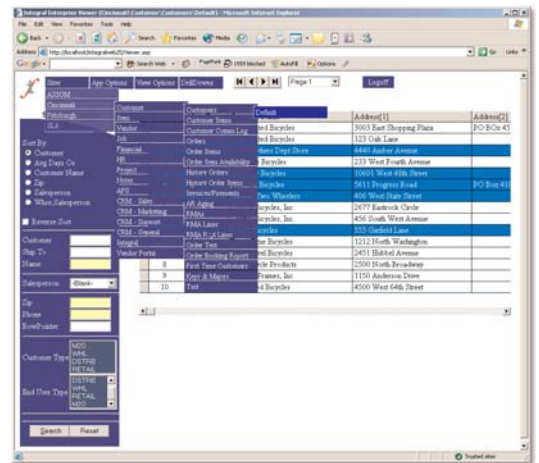
IEV is designed to be used by all users in your company – whether they are executives or shop-floor workers. By giving access only where needed, IEV is secure, but is still completely customizable by the end-user, with very little training required.

IEV can also be used in an application integration capacity – with flexible client-side and server-side user-initiated scripting, the user can launch other data-aware applications; for example, launching a workflow based on data they have retrieved locally.

IEV comes with a host of pre-built inquiries that you can use right out of the box – and because of it’s native drill-down capability, all of the different areas of your system can be tightly integrated with IEV!

### The Issue: Data Fragmentation

Today’s businesses are faced with the problem of locating and assimilating data easily and quickly to drive critical business decisions at all levels of the enterprise. In response to a growing need to integrate data from many different sources stored both locally and remote throughout the enterprise, a new breed of Enterprise Data Access tools were developed to address this data fragmentation problem.



Integral Enterprise Viewer Web Client

Query

Web access

Drill down

Save inquiries as LAN or web-shortcuts for instant access

Report





**Infor Global Solutions** takes pride in the 20 years of experience we have in the discrete manufacturing industry. Using our deep base of industry knowledge and proven communications and planning applications, we help suppliers and manufacturers achieve their business goals.

We are passionately focused on developing comprehensive solutions that meet the unique challenges of manufacturers on a global scale. Our product suites are comprehensive, open and modular, giving you the optimal choices to meet today's challenges and leverage tomorrow's opportunities.

Furthermore, Integral Enterprise Viewer permits you to create multi-site inquiries across the breadth of the application, not just in those places where the application vendor has provided multi-site functionality. Also, you can combine existing inquiries equally – whether in the same site or not – to easily create summary / detail reports.

End-users can quickly set and adjust sort and select criteria for an inquiry. They can also create and store multiple customized views, based upon the developer default view, which then can be shared with co-workers given security clearance. They can also choose which fields of the inquiry they wish to include: the order, size, and format of the displays, and can include advanced features such as data-driven colorization and user-defined calculated fields. Finally, users can look at the data and explore it by drilling-down on related inquiries. They also can save or export the data they select to a printed report (Aboce™ PDF standard), an HTML file, an Excel spreadsheet, an e-mail message, a delimited text file (for importing into other applications), or a Crystal™ report.

Users can create short-cuts from any view as LAN or web-shortcuts, for instant access later (without needing to first launch Integral Enterprise Viewer). These shortcuts also can be called for other user applications and serve as an excellent systems-integration tool for the user to utilize Integral Enterprise Viewer in building data bridges between their application islands.

Data Snapshots further extend the end user's ability to analyze data providing text, form, grid and graph displays of the data. Integral provides the capability to copy the snapshot views to the clipboard for further manipulation and/or printing.

External programs can be run from the IEV LAN or Web clients, via a script designed by the developer. IEV can then integrate with this application via COM or command-line parameters, based on the data that the end user has selected when they initiate the script. Examples are included on how these programs can send e-mail messages, launch workflows, call data adapters, call an API of another application, launch the application Window based on the current record, initiate a .NET SOAP/XML Web Service call, and more.

[www.infor.com](http://www.infor.com)

1000 Windward Concourse Parkway  
Suite 100  
Alpharetta, GA 30005

Toll Free: +866.244.5479  
Tel: +1 678.319.8000  
Fax: +1 678.319.8370

DG\_SL\_DS\_IEV\_US\_1105